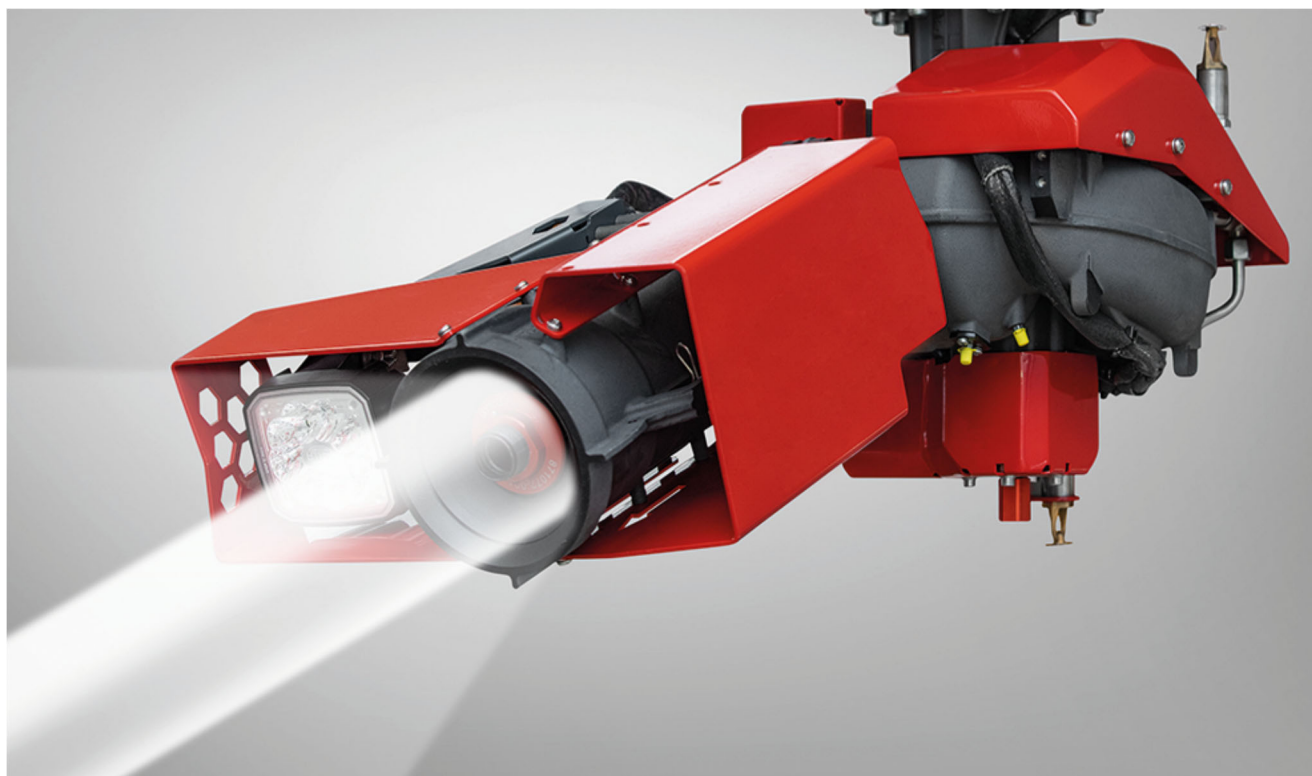


RPC Turret RM35C

Turret for Fixed Fire-fighting Systems



Description

The RPC Turret RM35C is a compact, electronically controlled turret for protecting storage areas, waste bunkers, airplane hangars, helicopter landing sites etc. The turret is available as a water, foam, dry powder, or combined foam/powder monitor (ChemCore).

Advantages

High flow rates

- Water or water-foam compound mixture:
1,500 to 4,750 l/min at 10 bar
[400 to 1,255 gpm at 145 psi]
- Dry powder:
up to 40 kg/s at 14 bar
[up to 88 lbs/s at 200 psi]
- ChemCore nozzle:
up to 4,750 l/min at 14 bar water and 10 kg/s dry powder
[up to 1,255 gpm at 200 psi water and 22 lbs/s dry powder]

Suitable for various extinguishing agents

- Water
- CAFS (compressed air foam)
- Foam (with/without foam barrel)
- Dry powder
- Water and dry powder combined (ChemCore)

Compact design

- It is ideal for tight installations thanks to its compact design.

Turret control

- Automatic control via infrared system
- Manual control: easy & intuitive
 - Portable joystick remote control with waist strap for operating up to six turrets
 - Tablet-remote control unit

Automatic control

- By linking with an infrared temperature monitoring system, the turret can be automatically directed at the seat of the fire and extinguish with pinpoint precision.

Oscillating function

- The turret traces a rectangle, the size and position of which are freely definable, and enables as a result fully automatic operation for extensive extinguishing.

RPC Turret RM35C

Turret for Fixed Fire-fighting Systems



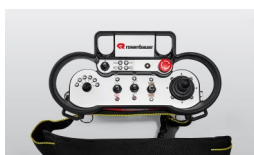
Technical data

Drive	Electric motors (12 V / 24 V)
Material	Corrosion-resistant alloy, dark gray, HC-coated
Rotation range	Max. 360° (-180° / +180°)
Swivel range	Max. -90° to +90° (without design cover)
Connection	Flange DN80, vertical
Nozzle	HSD3500: O-stream nozzle, maximum flow 3,500 l/min at 10 bar (925 gpm at 145 psi) Optional: HSD4800: O-stream nozzle, maximum flow 4,750 l/min at 10 bar (1,255 gpm at 145 psi)
Jet adjustment	Electrical adjustment for full/spray jet (four levels)
Dry powder nozzle	Optional, maximum output 40 kg/s (88 lbs/s)
ChemCore nozzle	Optional, integrated combined water/dry powder O-stream nozzle maximum 4,750 l/min (1,255 gpm) water and 10 kg/s (22 lbs/s) dry powder
Control system	Electronic control via CAN-bus 2.0
Path measurement	Mechanical rotary encoder
Spotlight	LED (1200lm)
Dimensions	LxWxH: 910 x 520 x 425 mm (35.8 x 20.4 x 16.7 in)
Weight	Approx. 42 kg (93 lbs)
Operating temperature	-20 °C to +70 °C (-4°F to 158°F)

Protection Unit

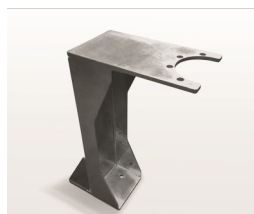
For additional turret protection in harsh environments with high dust exposure a protection unit for the RPC Turret RM35C is available. Within a short time the turret is moved into attack position by moving forwards and thereby pushing the gate upwards.

Accessories



RPC Turret Remote Control

There exist two models of the remote control unit for the operation of turrets in fixed fire-fighting systems: a purely cable-operated unit and a combined cable/wireless unit. Up to six turrets in one CAN-bus system can be operated with this control unit. There is also an ATEX version available.



Console

Due to different installation conditions (wall-, ceiling- or ground-mounting) a variety of prefabricated consoles is available.

Contact

Rosenbauer Brandschutz GmbH
Paschinger Strasse 90
4060 Leonding, Austria
Tel.: +43 732 6794-0
Fax: +43 732 6794-91
E-Mail: stationary@rosenbauer.com

www.rosenbauer.com

Follow us on

Text and images non-binding. The images may depict special editions that are only available at an additional charge. Subject to change due to technical advances.
RPC Turret RM35C_en_2020/10