

B32

Fully automatic hydraulic fire fighting platform



B32 acc. to EN 1777 / Lancashire / GB

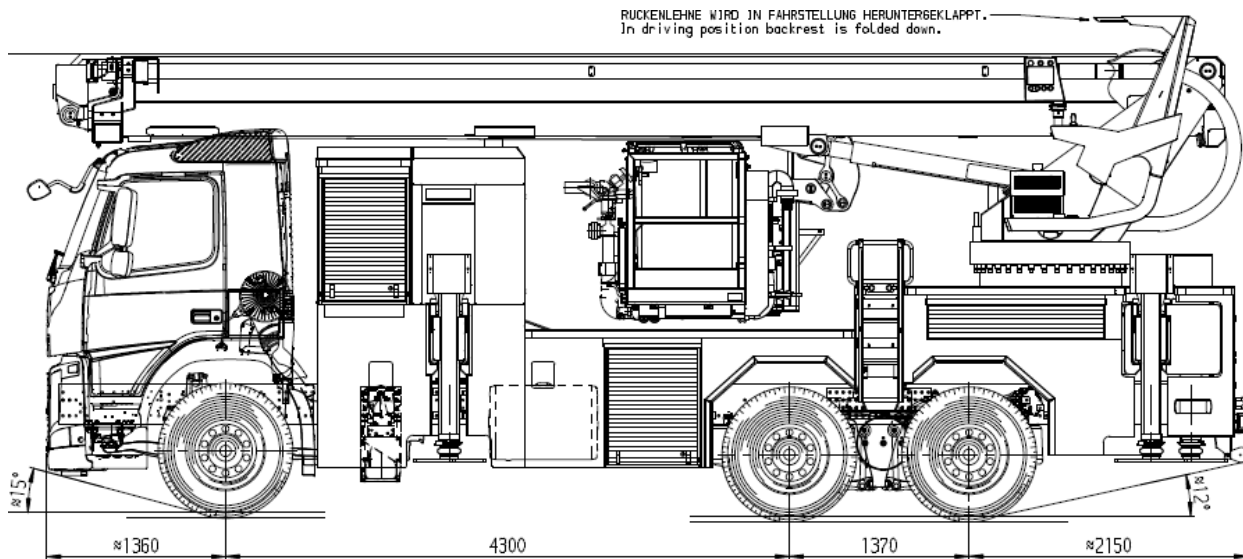


Technical Data

Chassis	Type	VOLVO FM 370
	Performance	387 hp (278 kW), Euro VI
	Gearbox	fully automatic
	Drive/wheelbase	6x2*4, with steerable rear axle, 4.300 + 1.370 mm
	Tyres (front, rear)	315/70 R 22.5
Cabin	Crew/type	1+1, short, with low roof
Bodywork	Type	aluminium safety bodywork with 6 locker rooms with roller shutters as well as 2 storage compartments with flaps, colour: RAL 3002
Jacking system	Type	horizontal-vertical, infinitely variable, with ground pressure control
	Jacking width	max. 5,93 (C-C) m
Main control panel	Type	main control stand „COMFORT“ with tiltable backrest and roof
Boom	Type	3-section telescopic main boom + 1-section cage boom. Main boom with 2 elevation cylinders., colour RAL 7016 (anthracite)
	Height	working height: 32,1 m, cage floor height: 30,1 m
	Control system	CAN bus
	Lifting capacity	lifting eye at the base section of the main boom: 2.200 kg, lifting eye at the top section of the main boom: 1.800 kg (at 18 m extension length)
Rescue Ladder	Type	A rescue ladder is permanently mounted along the boom
Rescue cage	Type	spacious cage made of aluminium, with fold-down platform at the front, suitable for wheelchairs, cage load: 600 kg with empty cage. Capacity approx. 550 kg (5 persons with equipment), depending on how the cage is equipped
	Accesses	3 accesses, thereof 1 at the front and 2 at the rear. All accesses are accessible in upright position (with BAs)
TWS	Type	Telescopic Waterway System (TWS) to supply extinguishing agent to the rescue cage (via three way swivel and water telescope alongside the boom), capacity TWS: up to 3000 l/min
Water monitor	Type	Akron Streammaster, remote-controlled from the main control panel and the cage
Stretcher support	Type	on the cage floor, easy to slide-in, capacity: 250 kg, combi-type, i.e. also suitable for basket-type stretchers
Electrics	Power	power supply 24 V/ 230 V / 400 V to the cage, protected in the boom
	Generator	portable generator, stowed at the turning frame
Weight	Max. permissible	total 26,0 t, thereof front axle: 8,0 t, thereof rear axle(s): 19,0 t
	Actual	19,50 t (empty, when delivered)
Dimensions	L x w x h	9,180 mm x 2,530 mm x 3,540 mm

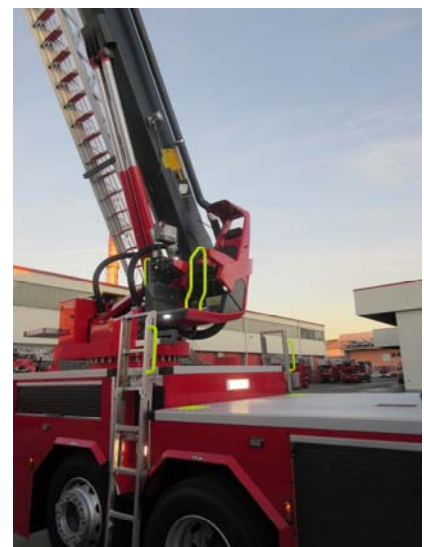
B32

Fully automatic hydraulic fire fighting platform



Further Equipment

- colour display in the cabin
- alternating flashing of chassis front lights
- colour displays at the jack control panels
- 2 LED light bars on the cabin roof
- LED lights at the front
- LED lights at the vehicle's sides
- LED lights at the rear
- reverse camera at the vehicle's rear, indication at the Rosenbauer display in the cabin
- audible warning system
- back-up warning signal, audible, with switch-off function
- intercom system between main control panel and cage
- remote start/stop of the generator from the main control panel and the cage
- locker room illumination with LEDs strips
- area illumination lights in acc. with EN1846T2, with LEDs
- automatic return of the boom to the boom headrest
- TMS (Target-Memory-System)
- VRS (vertical-rescue-system)
- spray nozzles at the cage to protect persons and cage
- hose reel at the cage (20 m)
- fixation for the cage for descending device (e.g. Rollgliss)
- 2 LED-lights at the cage front
- 2 x 230 V / 92 W LED floodlights, each one on the left and right side of the cage
- 2 x 230 V / 92 W LED floodlights, integrated in the cage floor, shining downwards
- anemometer at the cage with indication of the wind speed at the cage control panel and the main control panel
- 230 V emergency operation, driven by the generator



Contact

Rosenbauer Karlsruhe & Co. KG
Carl-Metz-Straße 9
76185 Karlsruhe, Germany
Tel.: +49 721 5965-0
Fax: +49 721 5965-238

www.rosenbauer.com

 www.facebook.com/rosenbauergroup

The illustrations may show optional extras only available at extra charge.
Changes due to technical development reserved.

DS-B32-Alu-Alu-VOLVO-FM370-3axle-EuroVI-A1T0018-2016-03-10-EN